



INSTRUCTIONS FOR USE OF AQUAJECT INJECTOR SYSTEM

(for use only with DIOP IOL)

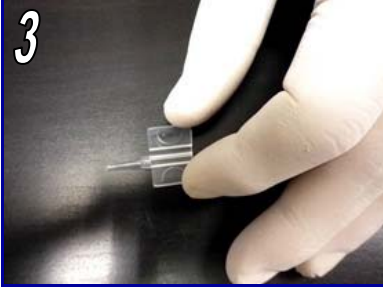
Caution: Federal law restricts this device to sale by or on the order of a licensed veterinarian. For animal use only by a licensed veterinarian.

FOR ANIMAL USE ONLY
STERILE  0434



1 Examine the outer peel pouch prior to opening to ensure sterility has been maintained.

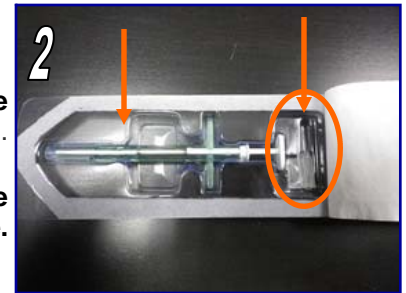
Once pouch open use sterile technique.



3 Open and hold the cartridge flaps in such a way that it is easy to place the lens.

Ensure both injector and cartridge are in place..

Remove the Aquaject cartridge from its blister package.

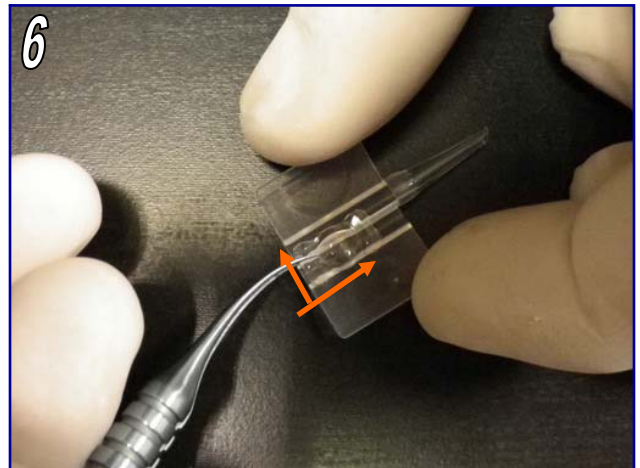


4 Remove the DIOP® IOL yellow support with a suture forceps (without teeth).



5 Carefully remove the sterile DIOP® IOL from its yellow support, using a very smooth upward pressure. Rinse IOL with sterile BSS.

While holding the wings of the cartridge in the open position, place the lens longitudinally in the folding chamber.



7 Inject small amount of sterile BSS onto DIOP® IOL when placed in cartridge to facilitate passage. Do not use viscoelastic with DIOP IOL and Aquaject Injector System.

8 Using a suitable instrument, apply gentle pressure on the lens optic and carefully fold the lens by bringing the wings of the cartridge together.



It is strongly recommended that the Aquaject Injector only be used with the DIOP IOL

INSTRUCTIONS FOR USE OF AQUAJECT INJECTOR SYSTEM

(for use only with Diop IOL)

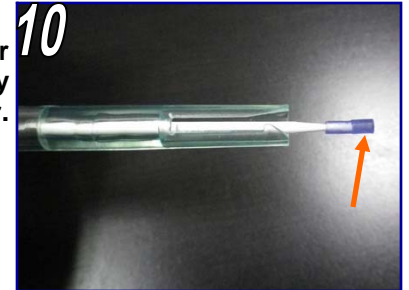
STERILE CE 0434



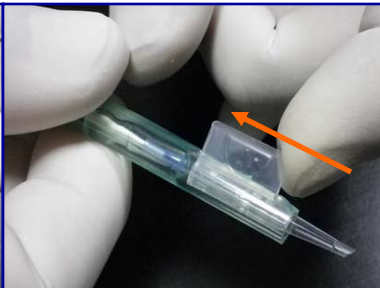
FOR ANIMAL USE ONLY



Ensure the back haptic of the DIOP® IOL is not trailing and it is not outside the cartridge. Take care that the haptics of the lenses are not pinched by the edges of the closed cartridge.



Remove the Aquaject injector from its blister pack. Check the cushion is straight and properly fixed on the tip of the plunger.



Fix the cartridge with properly placed lens on Injector, by sliding the same into the front slot of injector.



Push the plunger slowly and check whether it glides in the back hole of the cartridge.

Push the plunger slowly until the first haptic of DIOP® IOL goes out of the injection cartridge.



Then, let the plunger go backward as shown.

Apply a final pressure on the plunger for delivering the lens into the lens capsule.



Surgeon should determine the pressure as per their technique, procedure and need.

Distributed in Canada & USA by



4350 Mainway Drive
Burlington, Ontario CANADA
L7L5R7 1-877-909-2242

To view a video of Dioptrix IOL being loaded into injector please go to:

www.youtube.com/watch?v=jC6ddE1nPzg

Product of France
DIOPTRIX

13 rue d'Ariane - 31240 L'Union - France - Tel : +33 534 301 244 - Fax : + 33 561 610 995
RCS Toulouse B 417 951 530 00019 - APE 4646Z - TVA Intra-communautaire : FR 10 417 951 530
info@dioptrix.com - www.dioptrix.com